

Lucrarea de laborator N 14
Tema: Componente VCL in C++ Builder,

De descris proprietățile principale și de realizat careva exemple folosind următoarele componente:

Nr.Var	Componentele
1	MainMenu, Label, Animate
2	MainMenu, Edit, Button
3	MainMenu, Memo
4	MainMenu, CheckBox
5	MainMenu, RadioButton
6	MainMenu, ListBox
7	MainMenu, ComboBox
8	MainMenu, GroupBox
9	MainMenu, RadioGroup
10	MainMenu, Panel, ColorBox
11	MainMenu, Image, OpenPictureDialog
12	MainMenu, BitBtn
13	MainMenu, ColorBox, Memo
14	MainMenu, TabControl
15	MainMenu, TrackBar
16	MainMenu, ProgressBar
17	MainMenu, Animate, Button
18	MainMenu, DateTimePicker
19	MainMenu, StatusBar
20	MainMenu, OpenFileDialog
21	MainMenu, SaveDialog
22	MainMenu, OpenPictureDialog
23	MainMenu, SavePictureDialog

Exemplu

În acest exemplu sunt prezentate careva funcții și proprietăți a următoarelor componente:

- MainMenu
- Memo
- Panel
- RadioButton
- ColorBox
- ComboBox
- OpenFileDialog

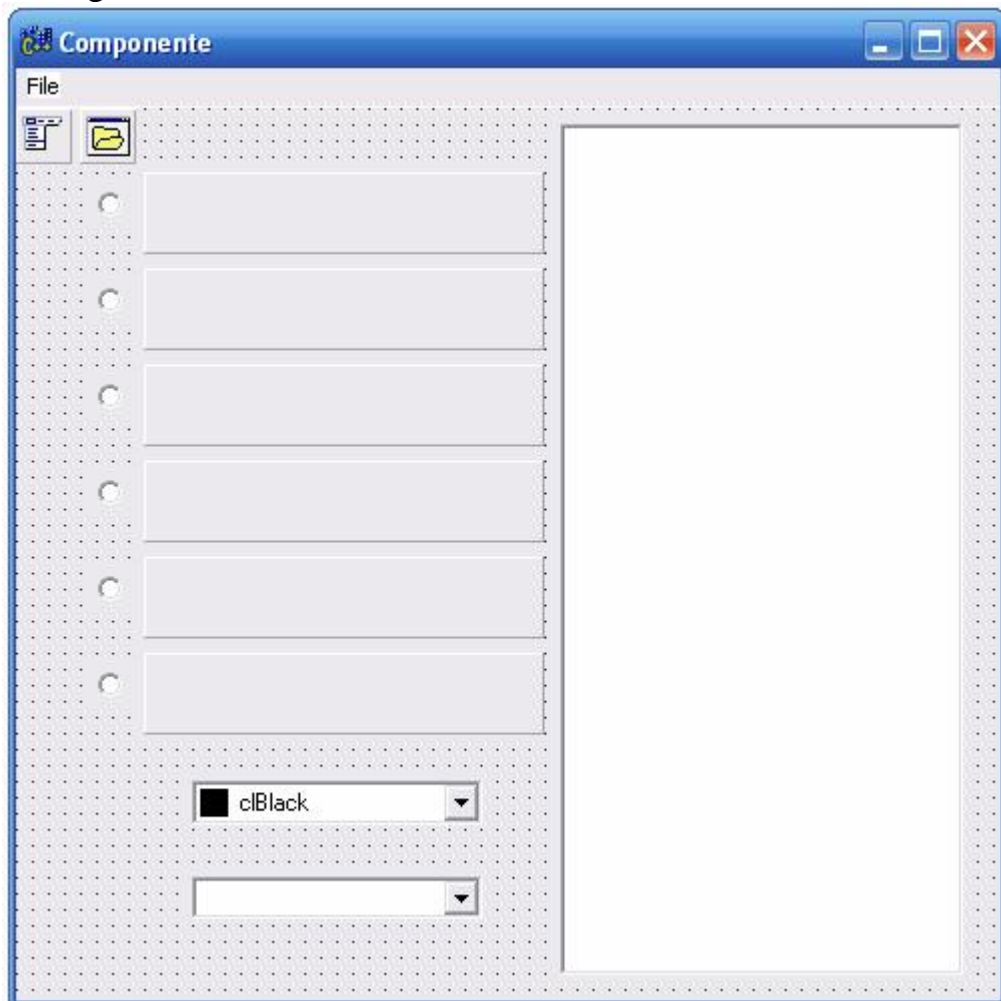


Fig.1 Compenentele

Listingul Programului

```
//-----  
#include <vcl.h>  
#pragma hdrstop  
#include "Unit1.h"  
//-----  
#pragma package(smart_init)  
#pragma link "CGRID"
```

```

#pragma resource "*.dfm"
TForm1 *Form1;
//-----
__fastcall TForm1::TForm1(TComponent* Owner)
    : TForm(Owner)
{
}
//-----
void __fastcall TForm1::ColorBox1Change(TObject *Sender)
{
if(RadioButton1->Checked==true)Panel1->Color=ColorBox1->Selected;
if(RadioButton2->Checked==true)Panel2->Color=ColorBox1->Selected;
if(RadioButton3->Checked==true)Panel3->Color=ColorBox1->Selected;
if(RadioButton4->Checked==true)Panel4->Color=ColorBox1->Selected;
if(RadioButton5->Checked==true)Panel5->Color=ColorBox1->Selected;
if(RadioButton6->Checked==true)Panel6->Color=ColorBox1->Selected;
}
//-----
void __fastcall TForm1::ComboBox1Change(TObject *Sender)
{
if(RadioButton1->Checked==true)Panel1->Caption=ComboBox1->Text;
if(RadioButton2->Checked==true)Panel2->Caption=ComboBox1->Text;
if(RadioButton3->Checked==true)Panel3->Caption=ComboBox1->Text;
if(RadioButton4->Checked==true)Panel4->Caption=ComboBox1->Text;
if(RadioButton5->Checked==true)Panel5->Caption=ComboBox1->Text;
if(RadioButton6->Checked==true)Panel6->Caption=ComboBox1->Text;
}
//-----
void __fastcall TForm1::Open1Click(TObject *Sender)
{
if (OpenDialog1->Execute())
    Memo1->Lines->LoadFromFile(OpenDialog1->FileName);
else
    Memo1->Clear();
Memo1->Alignment=taCenter;
}
//-----
void __fastcall TForm1::Exit1Click(TObject *Sender)
{
Close();
}
//-----

```

Rezultatul

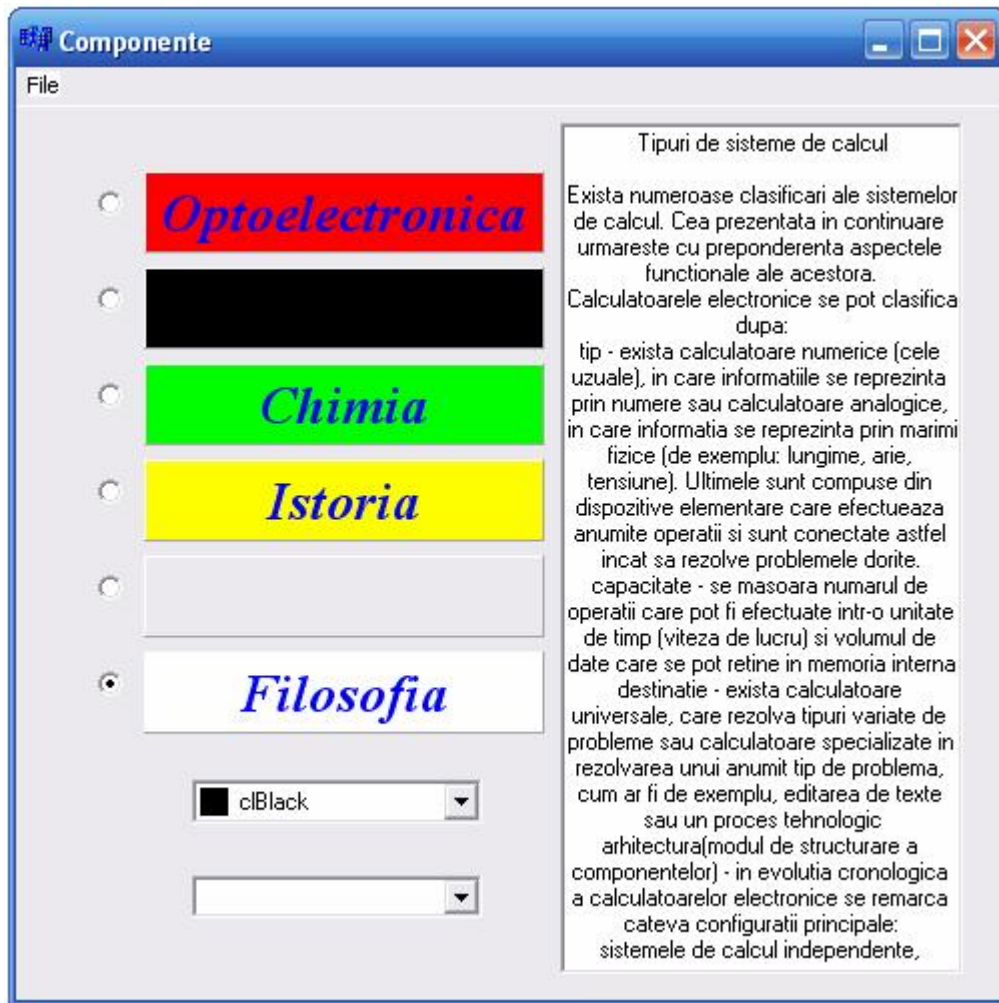


Fig.2 Rezultatul